

# Portsea front beach – Options Analysis

## Option 1

### Configuration dredging

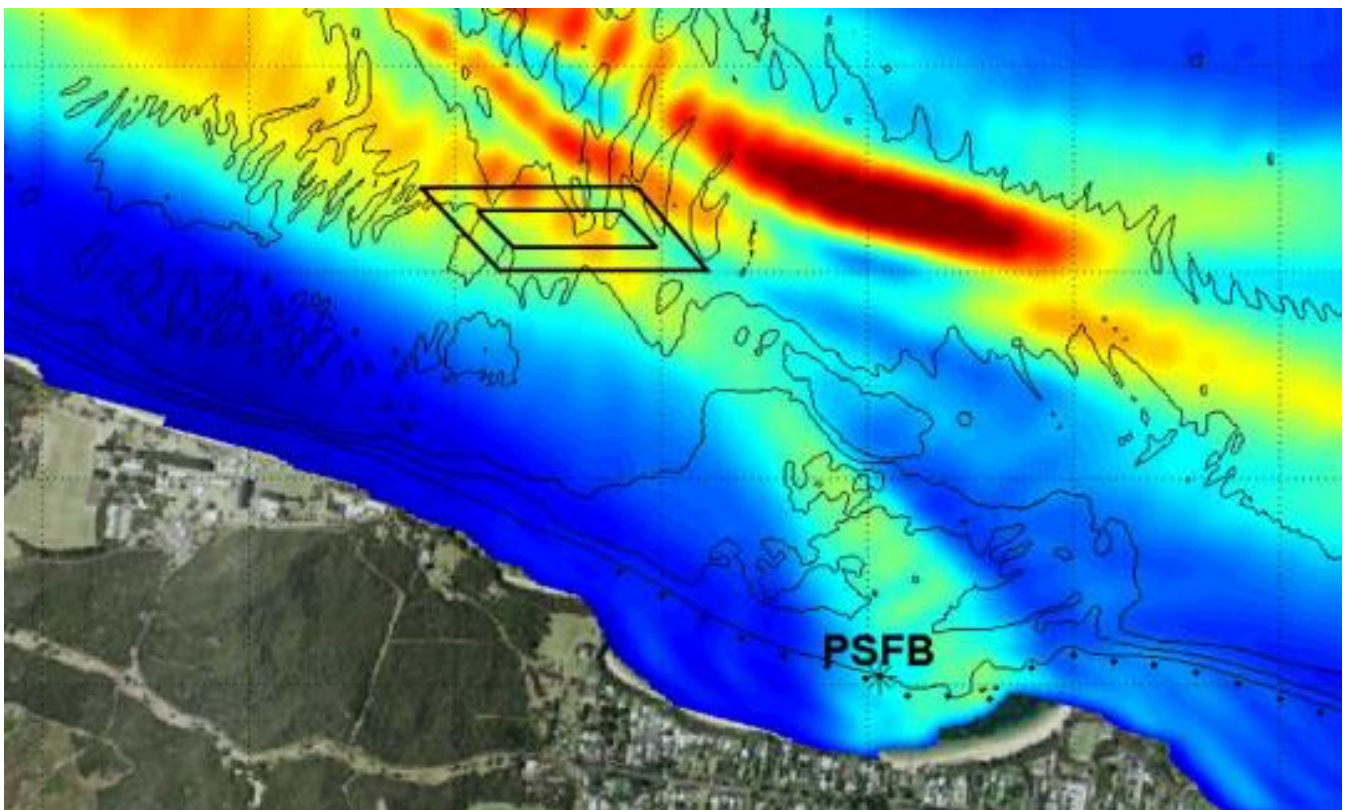
#### Description

Modify the distribution of wave energy along the Portsea Front Beach shoreline to minimise erosion by shaping the seabed with dredging. Dredged material could be used to restore the beach.

#### Scenario

Up to three configurations are to be examined, along with and without sand nourishment.

Configuration dredging is designed to divert wave energy away from the problem area, reducing storm erosion and the high rate of littoral drift transport. If suitable, the dredged material can be disposed on the adjacent shore, minimising dredging cost and benefiting the littoral drift sediment budget. Two options would be modeled initially, from which a third option would be designed.



# Portsea front beach – Options Analysis



© The State of Victoria Department of Environment, Land, Water and Planning 2015



This work is licensed under a [Creative Commons Attribution 4.0 International licence](http://creativecommons.org/licenses/by/4.0/). To view a copy of this licence, visit <http://creativecommons.org/licenses/by/4.0/>.



Environment,  
Land, Water  
and Planning