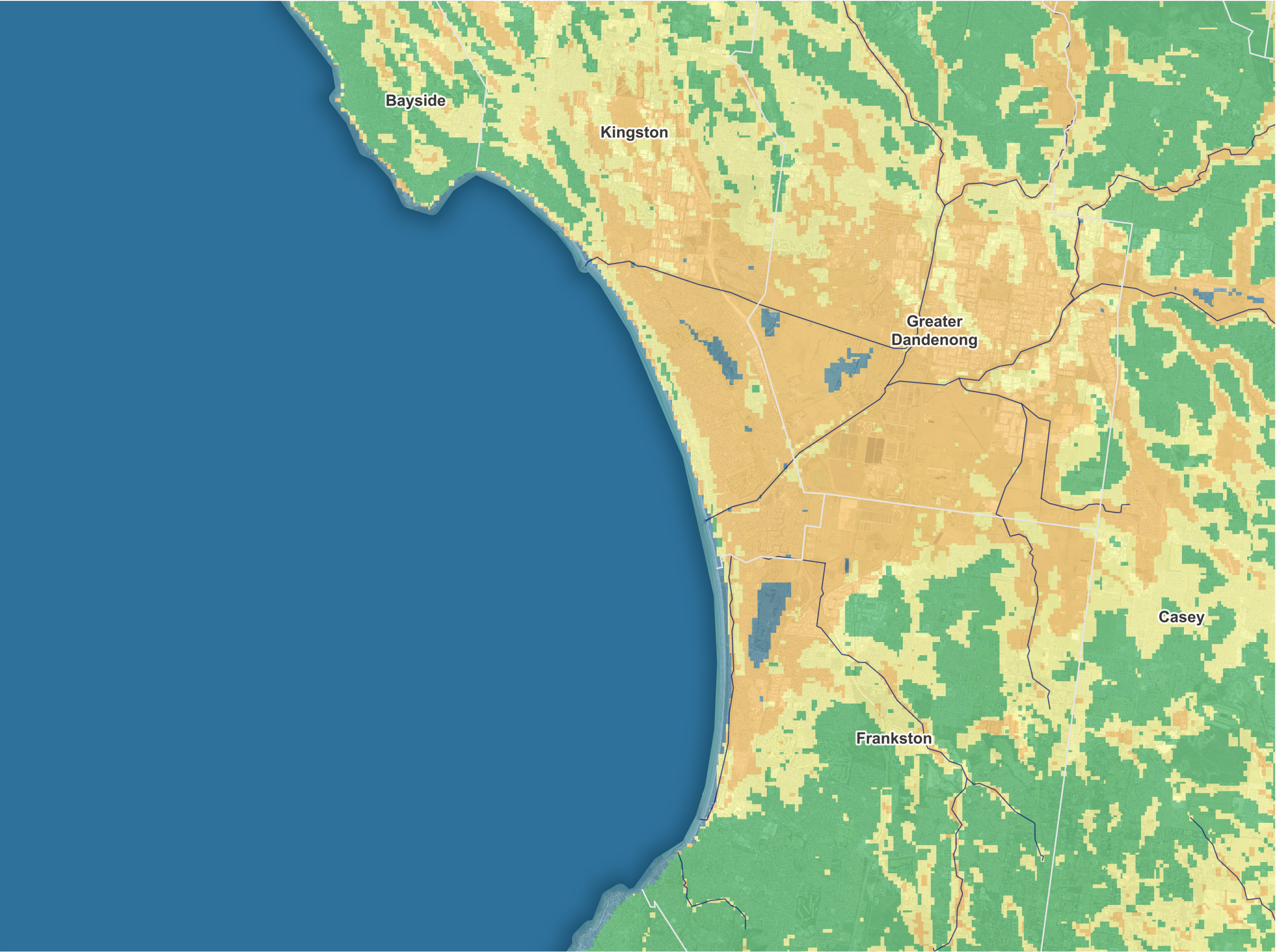


# Port Phillip Bay Coastal Hazard Assessment

## Groundwater

Sub area 5: Kingston and Frankston



### Groundwater depths

#### 0.0 m sea level rise

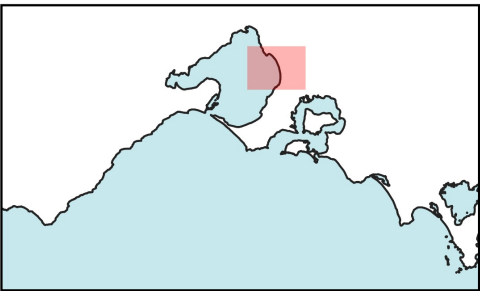
- Surface water  
(Depth: Above 0 m AHD)
- Shallow groundwater  
(Depth: 0 m to 2 m AHD)
- Intermediate groundwater  
(Depth: 2 m to 5 m AHD)
- Deep groundwater  
(Depth: Greater than 5 m AHD)
- Waterways
- Local government area boundaries

AHD: Australian Height Datum.

All future hazard extents have been estimated based on “present day” ground and sea bed elevations (topography and bathymetry). Estimates do not consider possible future shoreline changes as part of calculations.

For further information regarding the modelling and analysis presented here, please see additional documentation.

0 1 2 3 km



Universal Transvers Mercator Projection  
Datum: Geocentric Datum of Australia 1994 ~ GDA94  
Map Grid of Australia (MGA), Zone 55.



Energy,  
Environment  
and Climate Action

**Disclaimer**  
This publication may be of assistance to you but the State of Victoria and its employees do not guarantee that the publication is without flaw of any kind or is wholly appropriate for your particular purpose and therefore disclaims all liability for any error, loss or other consequence which may arise from you relying on any information in this publication.

**Accessibility**  
If you would like to receive this publication in an accessible format such as large print or black and white please telephone the DEECA Customer Service Centre 136 186, or email [customer.service@delwp.vic.gov.au](mailto:customer.service@delwp.vic.gov.au).  
Deaf, hearing impaired or speech impaired?  
Call us via the National Relay Service on 133 677 or visit [www.relayservice.com.au](http://www.relayservice.com.au)  
© The State of Victoria Department of Energy, Environment and Climate Action 2023