

# Port Phillip Bay Coastal Hazard Assessment

Communication Reference Pack Tool #2: Coastal Timelines



An interactive tool to build a coastal story and start the coastal adaptation conversation

Building a coastal story in the form of a timeline encourages discussion and consideration of past changes over time – including hazard-event driven, land use and other changes. Extending the timeframe past current day promotes discussion about what a resilient coast may look like in the future.

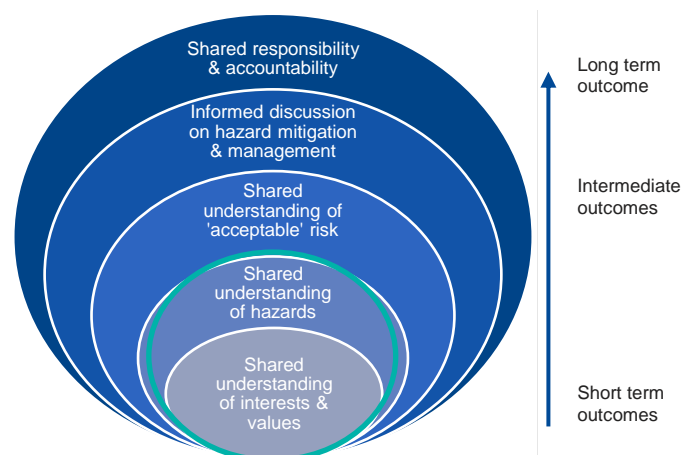
IAP2 Participation Goal:  Involve

## Purpose

Building a coastal timeline enables exploration of stakeholder and community values, highlights the interaction between various drivers of change, fosters an appreciation of a dynamic and changing landscape, and starts to explore a shared vision for the future. This provides a strong basis for informing decision making on suitable adaptation options for the future.

## Desired outcomes

Use of the timeline can contribute to achieving the short-term outcomes. These include developing a shared understanding of interests, values and hazards.



### Engagement outcomes

Key engagement outcomes for the timeline include:

- Increased appreciation of coastal dynamics, values and hazards.
- Enhanced engagement experience, by harnessing their local knowledge and experiences.
- People being engaged and excited about coastal management.
- People being on the journey to acknowledge what has come before and look to the future.

## Key technical messages

- Coastlines are dynamic and constantly changing.
- Many of the concerns and issues we face today, we have been facing for many years.
- Various bio-physical, socio-institutional, economic and infrastructure factors have shaped our coasts.
- Climate change may potentially increase the impacts of some physical drivers (such as hazard magnitude and frequency).
- Understanding the history of change helps to prepare for the future.

## Audience

Most suitable for	Less suitable for
Broader community	Delivery Partners
Traditional Owners	Technical specialists
Coast / foreshore users and interest groups	Peak bodies
Coastal landholders and residents	



## Process

1. Create a PowerPoint, Publisher or online timeline template. Populate this with key events, population growth, tourism statistics and prompter questions.
2. Include a question/s and some space on the template that enables discussion on the future aspirations and opportunities for the coast.
3. Take your timeline to events, you can print multiple versions, laminate, and/or use sticky notes.
4. Take photos at the end of each pop-up event, to ensure sticky notes aren't lost.
5. Analyse and summarise the content into key themes, for drivers of change and the future opportunities. Includes developing a suitable presentation layout that clearly presents key findings.
6. Consider engaging graphic design to produce a final timeline.
7. Share your timeline on the project website or with the community to close the loop.

## Tips and Tricks

- Shift time periods on your timeline to focus on the last ~50 years or most likely period of memory – this allows enough space to populate more recent history, with some key events further back.
- You can use two timelines splitting at the present to focus on past events and aspirations for the future.
- Use in conjunction with large maps and images.
- Only populate with some key events to start off with, you don't want to capture everything before the community has a chance to add.
- Acknowledge Traditional Owners – this should be the first thing on your timeline, with no defined start / end date. Can also add an Acknowledgement to Country.
- 'Theme' contributions and events, e.g. major hazard events (floods, storms); engineering / infrastructure (sea walls, coastal protection); legislation, policies / plans (release of strategic documents); governance changes and people (establishment of groups, organisations or key community contributions).
- Customise timelines for the region. For example, if tourism is a big economic driver, add any statistics or growth through time (people or \$), if population growth or decline has had a large impact on the region, add these statistics as a graph in the background.



Ensure your messages are appropriate for the desired outcome and audience.

Use your organisation's engagement plan/principles and local context to tailor messaging.

Seek input from delivery partners to ensure messaging is consistent, coordinated, and up to date.

## Accessibility

Options to improve accessibility could include:

- Facilitator to audio describe and assist populating the timeline for those with hearing / physical impairments.
- Written instructions and printed information for people with hearing impairments or in different languages.

## Potential risks

Risk	Mitigation
People are reluctant to share.	Encouragement from facilitators that all contributions are valid. Highlight broad range of themes that influence the coast.
Focus only on past or recent issues.	Encourage capture of past issues and then guide conversation to what we can learn from these experience and what people would like to see in the future.
Sticky notes are lost or misplaced.	Take clear photos of timelines after each event. Reuse of a laminated timeline is possible, but ensure a record is kept.

## Tools, materials and resources

The primary materials are A1 or A0 posters of your timeline to take to pop-up events. These can be laminated for multiple uses (taking photos before removing any sticky notes). Other equipment includes:

- Pens and sticky notes.
- An easel, table or board for displaying the timeline.

One staff member can manage gathering contributions, you will also require time and resources to digitise contributions and graphic design (if required).

Difficulty level:  Easy



Graphic designed timeline with themes themed timeline

## Alternative for online delivery

- Create your templates using online third-party platforms e.g. MURAL™, or Google Jamboard™ allowing participants to virtually add their ideas from their own computer.

## Evaluation

Success of the coastal story timeline can be evaluated through:

- Number and diversity of contributions.
- Qualitative assessment:
  - Do people appear more engaged in coastal management?
  - Do people have a better appreciation for the dynamic nature of the coast?
  - Are conversations more positive about the future, rather than airing issues/problems?

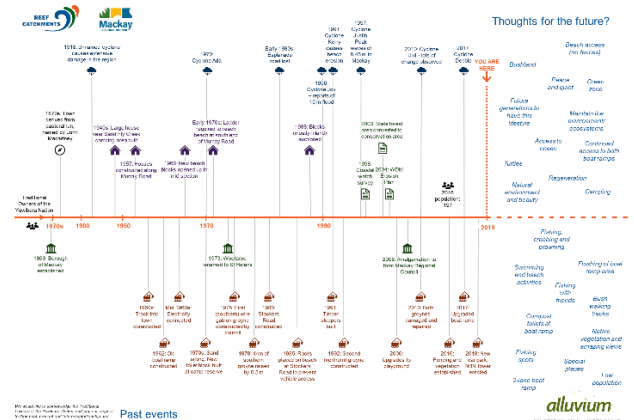
## Strengths and weaknesses

Strengths	Weaknesses
Engaging activity for a wide variety of stakeholders.	Generally more effective at in-person events.
Relatively cheap and easy to implement.	Requires resources to digitise / capture comments.
Can achieve a variety of outcomes.	
Can be adapted for use online through MURAL, Jamboard or other tools.	

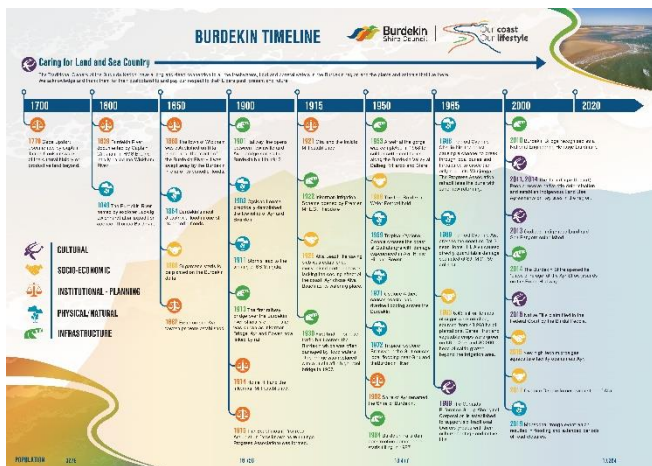
Indicative cost \$ Low

## Examples and references

- Douglas Shire's Coastal story [douglascoast.engagementhub.com.au/projects/download/1418/ProjectDocument](https://douglascoast.engagementhub.com.au/projects/download/1418/ProjectDocument)



Simple timeline with no graphic design



Graphic designed timeline split into key eras and themes



Themes for the future gathered from the timeline activity

We acknowledge Victorian Traditional Owners and their Elders past and present as the original custodians of Victoria's land and waters and commit to genuinely partnering with them and Victoria's Aboriginal community to progress their aspirations.



© The State of Victoria Department of Energy, Environment and Climate Action December 2023.

**Creative Commons**

This work is licensed under a Creative Commons Attribution 4.0 International licence, visit the [Creative Commons website](http://creativecommons.org/licenses/by/4.0/) (http://creativecommons.org/licenses/by/4.0/).

You are free to re-use the work under that licence, on the condition that you credit the State of Victoria as author. The licence does not apply to any images, photographs or branding, including the Victorian Coat of Arms, and the Victorian Government and Department logos.

**Disclaimer**

This publication may be of assistance to you but the State of Victoria and its employees do not guarantee that the publication is without flaw of any kind or is wholly appropriate for your particular purposes and therefore disclaims all liability for any error, loss or other consequence which may arise from you relying on any information in this publication.

**Accessibility**

To receive this document in an alternative format, phone the Customer Service Centre on 136 186, email [customer.service@delwp.vic.gov.au](mailto:customer.service@delwp.vic.gov.au), or contact National Relay Service on 133 677. Available at [DEECA website](http://www.deeca.vic.gov.au) (www.deeca.vic.gov.au).